



## Removal and Fitting of Drawers

BS Flush Front Filing & Classic Front Cabinet  
(New Style Slides - Oct 2010 onwards)

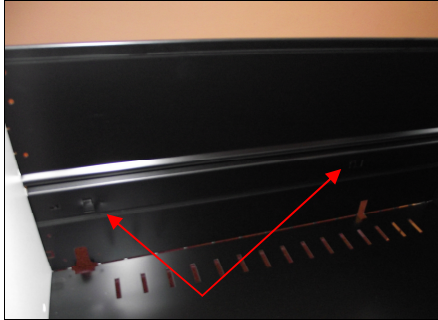


### Drawer Removal

*Please ensure that the drawer is unloaded prior to removal*



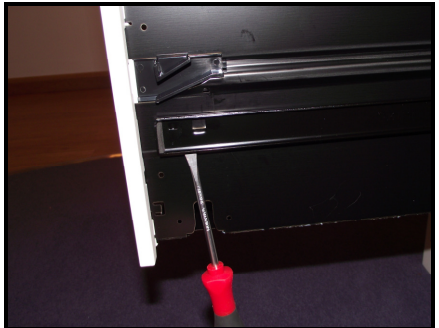
Fully extend the drawer.



Look inside and take note of how the runners are fitted to the drawer, there is a front and rear tag lancing on each side.



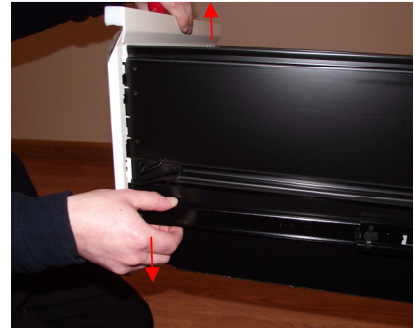
And also a retaining 'pip' at the front (this prevents the drawer coming off of the runners accidentally)



Insert a flat head screwdriver underneath the front of the runner as shown. You could also insert from the top whichever you find easier.



You need to lever the runner member away from the drawer body as shown thus negating the retaining pip.



The drawer is then free to be lifted upwards off the front tag lancing



Repeat this on the opposite runner so that you have the drawer free of both front lancements.  
(Support the weight of the drawer)



You can then pull the drawer towards you away from the rear lancements



And clear of the unit the unit.