

# WELLBEING in the WORKPLACE

1050  
OFFICE  
WORKERS

In a recent Bisley sponsored study into wellbeing in the workplace, office workers were asked to evaluate their working environment. A recurring theme was that people want their own personal space.



## Wellness Together, Sapio Research

- 1000 office employees (full and part time)
- 50 employees responsible for Facilities Management
- All companies employed 50 or more people

Workplace design is **IMPORTANT**

**48%** think that the workplace design has a notable impact on their decision as to whether to stay with an employer

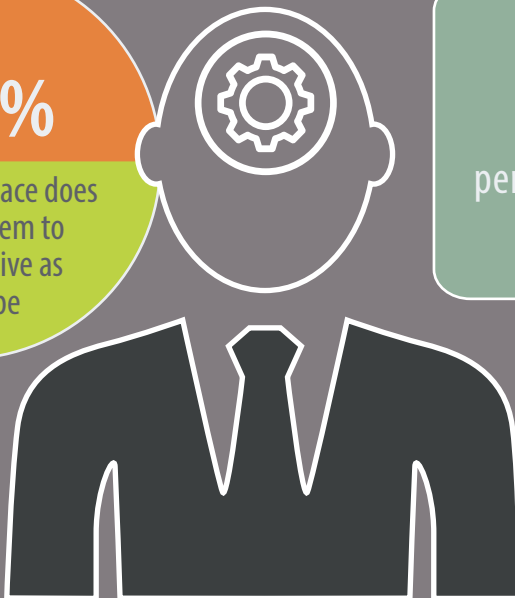
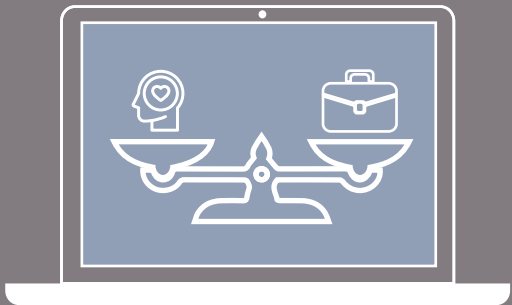
**49%** are either currently looking for a new job or likely to move in the next 18 months

**45%**

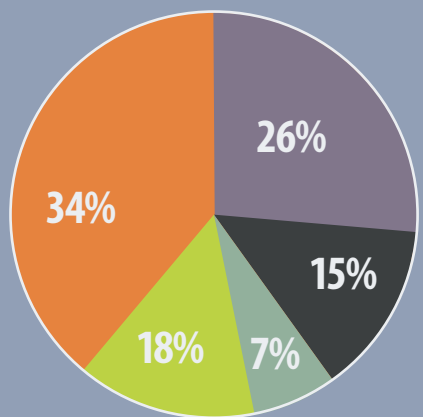
feel their workplace does not enable them to be as productive as they can be

Desire for personal space is **HIGH**

|                                                     |  |
|-----------------------------------------------------|--|
|                                                     |  |
|                                                     |  |
| <b>WORKPLACE FACILITIES CITED AS MOST IMPORTANT</b> |  |
| <b>No1: 53%</b><br>Own desk                         |  |
| <b>No5: 30%</b><br>Own locker or personal storage   |  |



If you could change one thing about your workplace storage, what would it be?

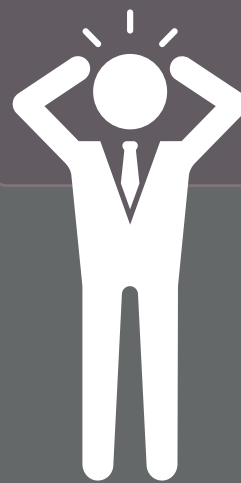


- My own desk
- More personal storage within reach
- Mobile storage\*
- Own secure locker or own storage space
- A clear desk policy



Profitability uplift for workplaces that provide employees with their own personal storage space

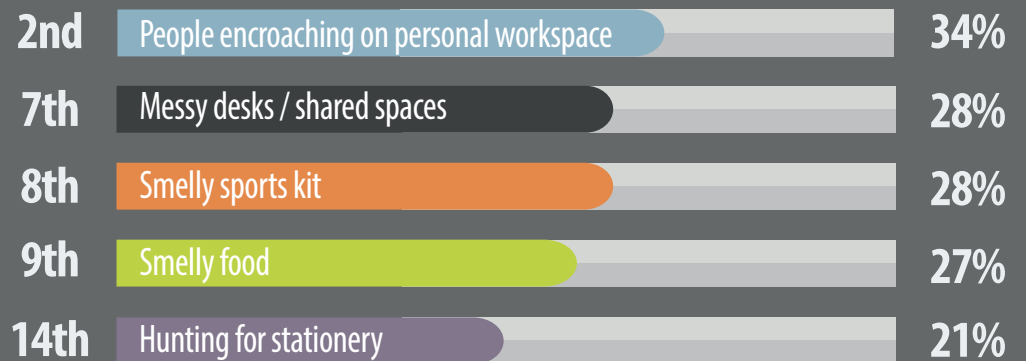
**13%**



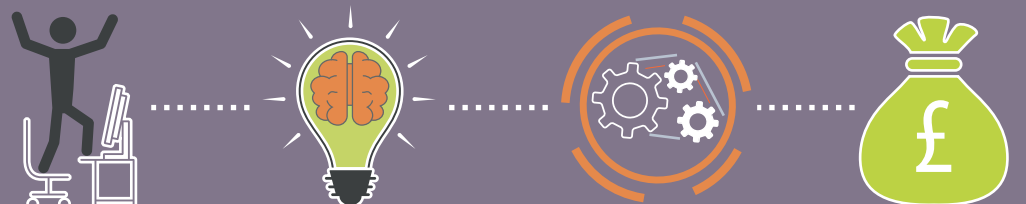
What do you find most distracting in your workplace environment?



**OUT OF THE TOP 15 WORKPLACE DISTRACTIONS, IMPROVED STORAGE CAN HELP WITH 5**



**CONCLUSION:** The survey provided evidence of strong correlations between people feeling good in the workplace and a positive outcome for the business. [Read more](#)



\* Mobile storage to suit my needs - more important to those in higher managerial positions (31% compared to just 9% for Admin staff)